



23 Sandwichmagnete 23 Sandwich magnets

AlNiCo



Magnetleisten
Magnetic strips
500°C

Plastoferrit Plastoferrites



Sandwichmagnete
Sandwich magnets
100°C

Plastoneodym



Sandwichmagnete, extra stark
Sandwich magnets, extra
strong
120°C

Samarium Kobalt Samarium Cobalt



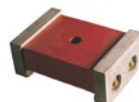
Sandwichmagnete
Sandwich magnets
150°C

Hartferrit Ferrite



Kraftmagnete
Powerful magnets
100°C

AlNiCo



Fixiermagnete
Fixing magnets
500°C

Kundenspezifische Magnetanfrage, Werkslieferung

Abmessung / Material / Magnetisierung /
Beschichtung / Temperatur / nach Zeichnung...

[eMail](#)

Your enquiry

Size / material / magnetization / coating /
working temperature / after drawing...

[eMail](#)

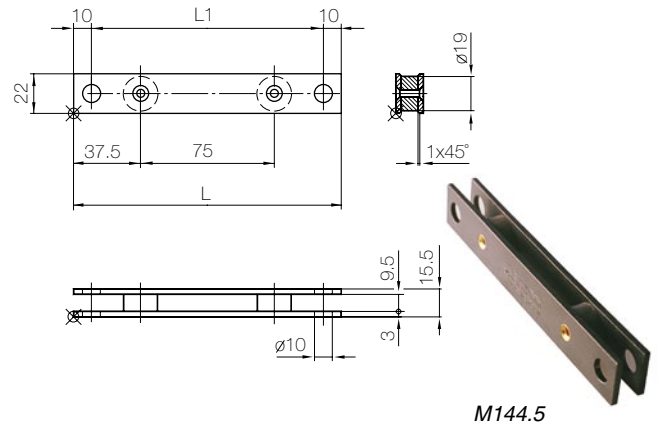


Magnetleisten Magnetic strips

Werkstoffe: **AINiCo 43/5, Weicheisen, Messing**
Materials: **AINiCo 43/5, soft iron, brass**

Temperatur: **max. 500°C**
Temperature:

Ausführung: **Eisenteile brüniert, genietet**
Execution: **iron pieces browned, riveted**

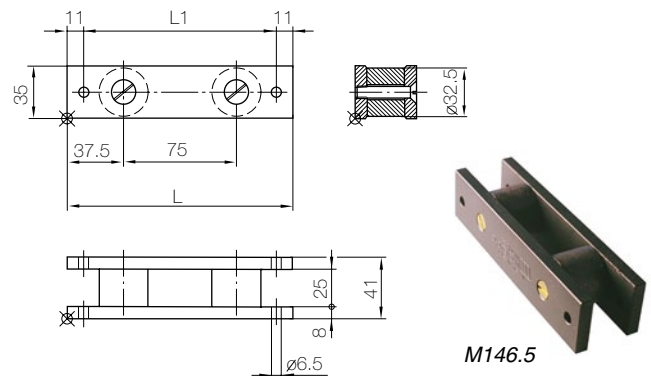


Bestell-Nr. Stock number	Abmessungen, mm Dimensions		Gewicht Weight g	Hubkraft Lift N
	L	L1		
M144.5	150	130	179	100
M145.5	300	280	370	175

Werkstoffe: **AINiCo 43/5, Weicheisen, Messing**
Materials: **AINiCo 43/5, soft iron, brass**

Temperatur: **max. 500°C**
Temperature:

Ausführung: **Eisenteile brüniert,
Schrauben Messing**
Execution: **Iron pieces bronzed,
brass screws**



Bestell-Nr. Stock number	Abmessungen, mm Dimensions		Gewicht Weight g	Hubkraft Lift N
	L	L1		
M146.5	150	128	940	450
M147.5	300	278	1900	800
M148.5	450	428	2850	1100



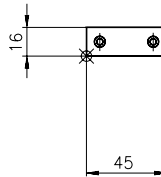
Sandwichmagnete Sandwich magnets

Werkstoffe: **Plastoferrit PF 9/21 p, Weicheisen**
Materials: **Plasto-ferrite PF 9/21 p, soft iron**

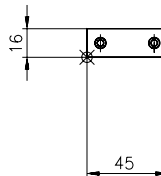
Temperatur: **max. 100°C**
Temperature: **max. 100°C**

Ausführung: **Polplatten vernickelt**
Execution: **pole plates nickel plated**

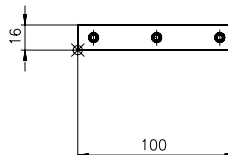
Bestell-Nr. Stock number	Gewicht Weight g	Hubkraft Lift N
M141.5	35	100



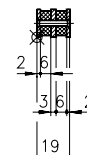
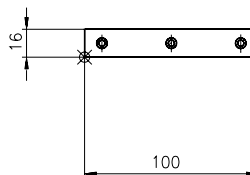
Bestell-Nr. Stock number	Gewicht Weight g	Hubkraft Lift N
M241.5	65	170



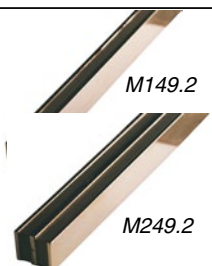
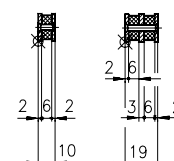
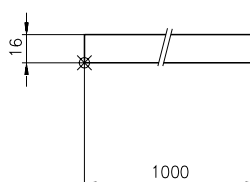
Bestell-Nr. Stock number	Gewicht Weight g	Hubkraft Lift N
M142.5	80	240



Bestell-Nr. Stock number	Gewicht Weight g	Hubkraft Lift N
M143.5	145	420



Bestell-Nr. Stock number	Gewicht Weight g	Hubkraft Lift N
M149.2	800	24 /cm
M249.2	1450	42 /cm



M149.2 M249.2



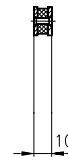
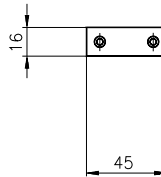
Sandwichmagnete, extra stark
Sandwich magnets, extra strong

Werkstoffe: **Plastoneodym PN60/72, Weicheisen**
Materials: **Plastoneodym PN60/72, soft iron**

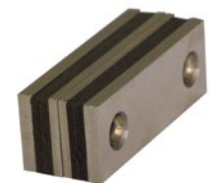
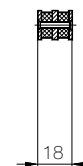
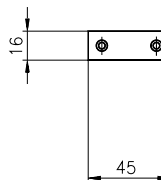
Temperatur: **max. 120°C**
Temperature: **max. 120°C**

Ausführung: **Polplatten verzinkt**
Execution: **pole plates zinc coated**

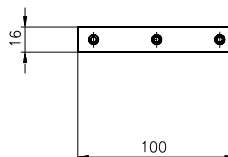
Bestell-Nr. Stock number	Gewicht Weight g	Hubkraft Lift N
M366145	35	260



Bestell-Nr. Stock number	Gewicht Weight g	Hubkraft Lift N
M366245	78	580



Bestell-Nr. Stock number	Gewicht Weight g	Hubkraft Lift N
M366100	101	560



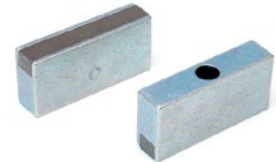
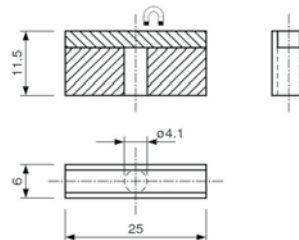


Sandwichmagnet Sandwich magnet

Werkstoffe: **SmCo, Weicheisen**
Materials: **SmCo, soft iron**

Temperatur: **max. 150°C**
Temperature:

Ausführung: **verzinkt**
Execution: **zinc coated**



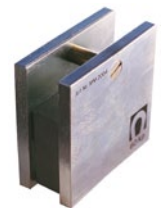
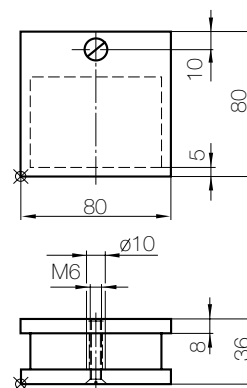
Bestell-Nr. Stock number	Gewicht Weight g	Hubkraft Lift N
M416090	12	50

Kraftmagnete Powerful magnets

Werkstoffe: **HF 28/26, Weicheisen, Messing**
Materials: **HF 28/26, soft iron, brass**

Temperatur: **max. 100°C**
Temperature:

Ausführung: **Stahlteile promatverzinkt**
Execution: **steel parts zinc coated**



Bestell-Nr. Stock number	Gewicht Weight kg	Hubkraft Lift N
MM2004	1.150	600

Fixiermagnet Fixing magnets

Werkstoffe: **AINiCo 43/5, Weicheisen, Messing**
Materials: **AINiCo 43/5, soft iron, brass**

Temperatur: **max. 500°C**
Temperature:

Ausführung: **Magnet rot lackiert, Polschuhe cadmiert, 2 Polschlussplatten.**
Execution: **magnet red painted, pole peaces cadmium plated, with 2 pol plates.**

Bestell-Nr. Stock number	Gewicht Weight kg	Hubkraft Lift N
M043	1.2	580

