



21 Flachtopfmagnete 21 Shallow pot magnets

Neodym Neodymium



80°C



80°C – 180°C



80°C – 200°C

Hartferrit Ferrite



80°C – 200°C



80°C – 200°C



80°C – 200°C



200°C



220°C Inox



220°C Inox

AlNiCo



500°C

Zubehör Accessories



Gummilippe als Schutz-
überzug
Rubber lip as a protective
coating



Stahlscheibe mit
Senkung
Steel disc with sinking



Stahlscheibe mit
Doppelklebeband
Steel disc with double-sided
tape

Kundenspezifische Magnetanfrage, Werkslieferung

Abmessung / Material / Magnetisierung /
Beschichtung / Temperatur / nach Zeichnung...

[eMail](#)

Your enquiry

Size / material / magnetization / coating /
working temperature / after drawing...

[eMail](#)

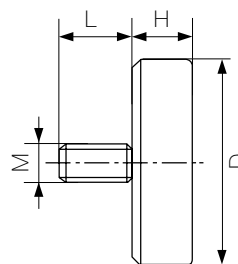


Flachtopfmagnete, extra stark Shallow pot magnets, extra strong

Werkstoffe: **N35**, Kunststoff, Weicheisen, verzinkt, mit Gewindezapfen
Materials: **N35**, plastic materials, soft iron, zinc coated, with spigot

Temperatur:
Temperature: **max. 80°C**

Bestell-Nr. Stock number	Abmessungen, mm Dimensions			Gewinde Thread	Gewicht Weight	Hubkraft Lift
	D	H	L	M	g	N
M740D	10	4.5	8	4	3	25
M741D	13	4.5	8	5	5	60
M742D	16	4.5	8	6	7.5	95
M743D	20	6.0	10	6	16	140
M744D	25	7.0	10	6	25	200
M745D	32	7.0	10	6	48	350

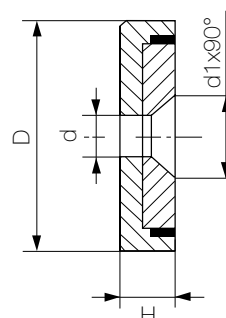


M743D

Werkstoffe: **N35**, Kunststoff, Weicheisen, verzinkt, mit Bohrung und Senkung
Materials: **N35**, plastic materials, soft iron, zinc coated, with drilling and lowering

Temperatur:
Temperature: **max. 80°C**

Bestell-Nr. Stock number	Abmessungen, mm Dimensions				Gewicht Weight	Hubkraft Lift
	D	d	d1 ± 0.5	H	g	N
M742C	16	3.5	7.1	4.5	5.7	75
M743C	20	4.5	9.5	6	12.5	105
M744C	25	4.5	9.5	7	23.5	160
M745C	32	5.5	11.5	7	38.5	310
M746C	40	5.5	11.1	8	74.0	500

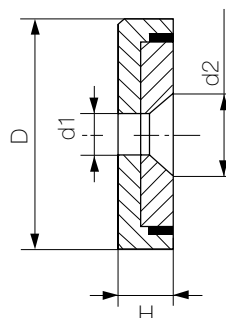


M743C

Werkstoffe: **N30UH**, Kunststoff, Weicheisen, verzinkt, mit Bohrung und Senkung
Materials: **N30UH**, plastic materials, soft iron, zinc coated, with drilling and lowering

Temperatur:
Temperature: **max. 180°C**

Bestell-Nr. Stock number	Abmessungen, mm Dimensions				Gewicht Weight	Hubkraft Lift
	D	d1	d2 ± 0.5	H	g	N
M752C	16	3.5	7.1	4.5	5.7	75
M753C	20	4.5	9.5	6	12.5	105
M754C	25	4.5	9.5	7	23.5	160
M755C	32	5.5	11.5	7	38.5	310
M756C	40	5.5	11.1	8	74	500



M753C

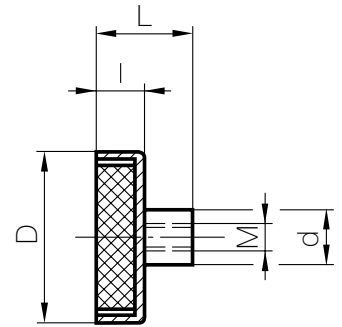


Flachtopfmagnete, extra stark Shallow pot magnets, extra strong

Werkstoffe: **N35**, Kunststoff, Weicheisen, verzinkt, mit Gewindebuchse
Materials: **N35**, plastic materials, soft iron, zinc coated with insert nut

Temperatur:
Temperature: **max. 80°C**

Bestell-Nr. Stock number	Abmessungen, mm Dimensions				Gewinde Thread M	Gewicht Weight g	Hubkraft Lift N
	D	d	l	L			
M738A	6	6	4.5	11.5	3	2.0	5
M739A	8	6	4.5	11.5	3	3.0	13
M740A	10	6	4.5	11.5	3	4.0	25
M741A	13	6	4.5	11.5	3	5.0	60
M742A	16	6	4.5	11.5	4	7.0	95
M743A	20	8	6.0	13.0	4	16.0	140
M744A	25	8	7.0	14.0	4	27.0	200
M745A	32	10	7.0	15.5	5	45.0	350

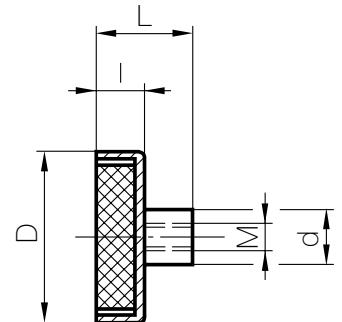


M744A

Werkstoffe: **SmCo**, Kunststoff, Weicheisen, verzinkt, mit Gewindebuchse
Materials: **SmCo**, plastic materials, soft iron, zinc coated with insert nut

Temperatur:
Temperature: **max. 200°C**

Bestell-Nr. Stock number	Abmessungen, mm Dimensions				Gewinde Thread M	Gewicht Weight g	Hubkraft Lift N
	D	d	l	L			
M490A	6	6	4.5	11.5	3	1.5	5
M489A	8	6	4.5	11.5	3	2.0	9
M491A	10	6	4.5	11.5	3	3.0	20
M492A	13	6	4.5	11.5	3	5.0	40
M495A	16	6	4.5	11.5	4	7.5	60
M496A	20	8	6.0	13.0	4	16.0	90
M494A	25	8	7.0	14.0	4	25.0	150
M497A	32	10	7.0	15.5	5	48.0	220



M494A

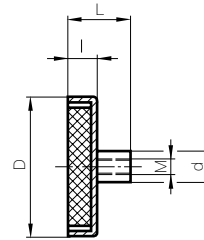


Flachtopfmagnete

Shallow pot magnets

Werkstoffe: **HF 24/16, Kunststoff, Weicheisen, verzinkt**
Material: **HF 24/16, plastic material, soft iron, zinc coated**

Temperatur: **max. 80°C**
Temperature: **max. 80°C**

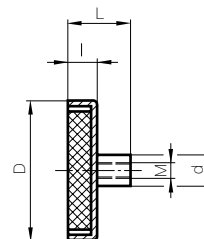


M320A-80

Bestell-Nr. Stock number	Abmessungen, mm Dimensions				Gewinde Thread	Gewicht Weight	Hubkraft Lift
	D	d	l	L	M	g	N
M100A-80	10	6	4.5	11.5	M 3	2	4
M160A-80	16	6	4.5	11.5	M 3	5	16
M200A-80	20	6	6.0	13.0	M 3	12	28
M250A-80	25	8	7.0	15.0	M 4	19	53
M320A-80	32	8	7.0	15.0	M 4	31	77
M360A-80	36	8	7.5	16.0	M 4	45	100
M400A-80	40	10	8.0	18.0	M 5	55	130
M470A-80	47	8	9.0	17.0	M 4	80	200
M500A-80	50	12	10.0	22.0	M 6	105	220
M630A-80	63	15	14.0	30.0	M 8	230	480
M800A-80	80	20	18.0	34.0	M 10	470	600
M1000A-80	100	22	22.0	43.0	M 12	965	1050

Werkstoffe: **HF 24/16, Kunststoff, Weicheisen, verzinkt**
Material: **HF 24/16, plastic material, soft iron, zinc coated**

Temperatur: **max. 200°C**
Temperature: **max. 200°C**



M320A-200

Bestell-Nr. Stock number	Abmessungen, mm Dimensions				Gewinde Thread	Gewicht Weight	Hubkraft Lift
	D	d	l	L	M	g	N
M100A-200	10	6	4.5	11.5	M 3	2	4
M160A-200	16	6	4.5	11.5	M 3	5	16
M200A-200	20	6	6.0	13.0	M 3	12	28
M250A-200	25	8	7.0	15.0	M 4	19	53
M320A-200	32	8	7.0	15.0	M 4	31	77
M360A-200	36	8	7.5	16.0	M 4	45	100
M400A-200	40	10	8.0	18.0	M 5	55	130
M470A-200	47	8	9.0	17.0	M 4	80	200
M500A-200	50	12	10.0	22.0	M 6	105	220
M570A-200	57	8	10.5	18.5	M 4	145	250

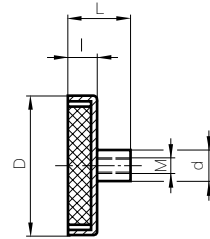


Flachtopfmagnete, inox Shallow pot magnets, inox

Werkstoffe: **HF 24/16**, Kunststoff, Edelstahlgehäuse
Material: **HF 24/16**, plastic material, Stainless steel case

Temperatur:
Temperature: **max. 220°C**

Geeignet bei Hygienevorschriften, besitzt hervorragende Resistenz gegen Chemkalien und eignet sich auch für galvanische Anwendungen.
Suitable to fulfil hygienic requirements, outstandingly resistant against chemicals and also suitable for galvanic applications.



M320A-I220

Bestell-Nr. Stock number	Abmessungen, mm Dimensions				Gewinde Thread	Gewicht Weight	Hubkraft Lift
	D	d	l	L	M	g	N
M250A-I220	25	8	7	16.0	M 5	20	32
M320A-I220	32	8	7	16.0	M 5	31	64
M400A-I220	40	8	8	16.5	M 5	56	100
M500A-I220	50	10	10	18.5	M 5	105	175
M630A-I220	63	8	14	22.0	M 5	230	280

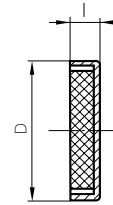


Flachtopfmagnete

Shallow pot magnets

Werkstoffe: **HF 24/16, Kunststoff, Weicheisen, verzinkt**
Material: **HF 24/16, plastic material, soft iron, zinc coated**

Temperatur: **max. 80°C**
Temperature: **max. 80°C**

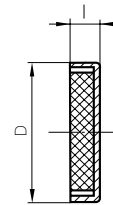


M360B-80

Bestell-Nr. Stock number	Abmessungen, mm Dimensions		Gewicht Weight g	Hubkraft Lift N
	D	l		
M160B-80	16	4.5	5	16
M200B-80	20	6.0	12	28
M250B-80	25	7.0	19	53
M320B-80	32	7.0	31	77
M360B-80	36	7.5	45	100
M400B-80	40	8.0	55	130
M470B-80	47	9.0	80	200
M500B-80	50	10.0	105	220
M570B-80	57	10.5	145	250
M630B-80	63	14.0	230	480
M800B-80	80	18.0	470	600

Werkstoffe: **HF 24/16, Kunststoff, Weicheisen, verzinkt**
Material: **HF 24/16, plastic material, soft iron, zinc coated**

Temperatur: **max. 200°C**
Temperature: **max. 200°C**



M360B-200

Bestell-Nr. Stock number	Abmessungen, mm Dimensions		Gewicht Weight g	Hubkraft Lift N
	D	l		
M100B-200	10	4.5	2	4
M160B-200	16	4.5	5	16
M200B-200	20	6.0	12	28
M250B-200	25	7.0	119	53
M320B-200	32	7.0	31	77
M360B-200	36	7.5	45	100
M400B-200	40	8.0	55	130
M470B-200	47	9.0	80	200
M500B-200	50	10.0	105	220
M570B-200	57	10.5	145	250
* M630B-200	63	14.0	230	480
* M800B-200	80	18.0	470	600
* M1000B-200	100	22.0	965	1050

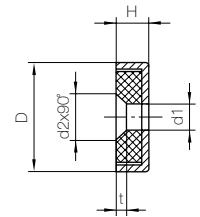
* Auslauf (solange Vorrat)
Delivery (until stocks are exhausted)



Flachtopfmagnete Shallow pot magnets

Werkstoffe: **HF 24/16**, Kunststoff, Weicheisen, verzinkt
Materials: **HF 24/16**, plastic materials, soft iron, zinc coated

Temperatur:
Temperature: **max. 80°C**



Bestell-Nr. Stock number	Abmessungen, mm Dimensions					Gewicht Weight g	Hubkraft Lift N
	D	d1	d2	t	H		
M200C-80	20	4.2	8.6	2.1	6	11	27
M250C-80	25	5.5	10.4	2.5	7	18	36
M320C-80	32	5.5	10.4	2.5	7	30	72
M400C-80	40	5.5	10.4	2.5	8	53	90

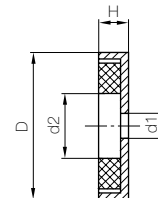


Hinweis: Für die Befestigung mit Schrauben DIN 7991 + ISO 14581 Ausführung M200C-200 usw. verwenden. (siehe Seite 21-7)

Reference: For the fastening with screws DIN 7991 + ISO 14581, use type M200C-200 etc. (please see pages 21-7)

Werkstoffe: **HF 24/16**, Kunststoff, Weicheisen, verzinkt
Materials: **HF 24/16**, plastic materials, soft iron, zinc coated

Temperatur:
Temperature: **max. 80°C**



Bestell-Nr. Stock number	Abmessungen, mm Dimensions				Gewicht Weight g	Hubkraft Lift N
	D	d1	d2	H		
M500C-80	50	8.5	22.0	10	90	180
M630C-80	63	6.5	24.0	14	205	290
M800C-80	80	6.5	11.5	18	470	540

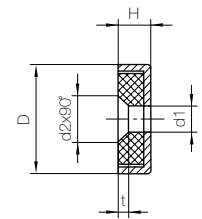




Flachtopfmagnete Shallow pot magnets

Werkstoffe: **HF 24/16**, Kunststoff, Weicheisen, verzinkt
Materials: **HF 24/16**, plastic materials, soft iron, zinc coated

Temperatur:
Temperature: **max. 200°C**



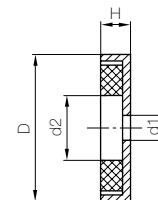
Bestell-Nr. Stock number	Abmessungen, mm Dimensions				H	Gewicht Weight g	Hubkraft Lift N
	D	d1	d2 ± 0.5	t			
M200C-200	20	4.2	9.9	2.1	6	11	27
M250C-200	25	5.5	12	2.5	7	18	36
M320C-200	32	5.5	12	2.5	7	30	72
M400C-200	40	5.5	12	2.5	8	53	90



Hinweis: Auch für die Befestigung mit Schrauben DIN 7991 + ISO 14581 geeignet.
Reference: Also suitable for the fastening with screws DIN 7991 + ISO 14581.

Werkstoffe: **HF 24/16**, Kunststoff, Weicheisen, verzinkt
Materials: **HF 24/16**, plastic materials, soft iron, zinc coated

Temperatur:
Temperature: **max. 200°C**



Bestell-Nr. Stock number	Abmessungen, mm Dimensions				Gewicht Weight g	Hubkraft Lift N
	D	d1	d2	H		
M500C-200	50	8.5	22.0	10	90	180
M630C-200	63	6.5	24.0	14	205	290
M800C-200	80	6.5	11.5	18	470	540



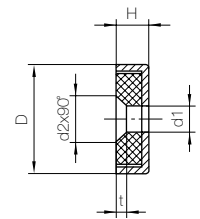


Flachtopfmagnete, inox Shallow pot magnets, inox

Werkstoffe: **HF 24/16**, Kunststoff, Edelstahlgehäuse
Materials: **HF 24/16**, plastic materials, Stainless steel case

Temperatur:
Temperature: **max. 220°C**

Geeignet bei Hygienevorschriften, besitzt hervorragende Resistenz gegen Chemikalien und eignet sich auch für galvanische Anwendungen.
Suitable to fulfil hygienic requirements, outstandingly resistant against chemicals and also suitable for galvanic applications.



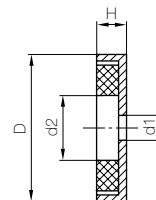
M250C-I220

Bestell-Nr. Stock number	Abmessungen, mm Dimensions					Gewicht Weight	Hubkraft Lift
	D	d1	d2 ± 0.5	t	H	g	N
M250C-I220	25	5.5	12	2.5	7	16.5	29
M320C-I220	32	5.5	12	2.5	7	27.0	58
M400C-I220	40	5.5	12	2.5	8	53.0	72

Werkstoffe: **HF 24/16**, Kunststoff, Edelstahlgehäuse
Materials: **HF 24/16**, plastic materials, Stainless steel case

Temperatur:
Temperature: **max. 220°C**

Geeignet bei Hygienevorschriften, besitzt hervorragende Resistenz gegen Chemikalien und eignet sich auch für galvanische Anwendungen.
Suitable to fulfil hygienic requirements, outstandingly resistant against chemicals and also suitable for galvanic applications.



M630C-I220

Bestell-Nr. Stock number	Abmessungen, mm Dimensions				Gewicht Weight	Hubkraft Lift
	D	d1	d2	H	g	N
M500C-I220	50	8.5	22	10	85	145
M630C-I220	63	6.5	24	14	195	230

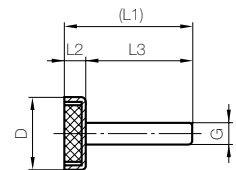


Flachtopfmagnete

Shallow pot magnets

Werkstoffe: **HF 24/16, Kunststoff, Weicheisen, verzinkt**
Materials: **HF 24/16, plastic material, soft iron, zinc coated**

Temperatur: **max. 200°C**
Temperature:



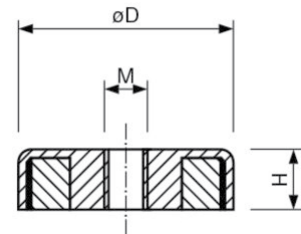
Bestell-Nr. Stock number	Abmessungen, mm Dimensions				Gewinde Thread	Gewicht Weight	Hubkraft Lift
	D	L1	L2	L3	G	g	N
M126625	20	31	6	25	M6	15	30
M126630	20	36	6	30	M6	22	30
M126620	25	27	7	20	M6	22	40



M126630

Werkstoffe: **HF 24/16, Kunststoff, Weicheisen, verzinkt**
Materials: **HF 24/16, plastic material, soft iron, zinc coated**

Temperatur: **max. 200°C**
Temperature:



Bestell-Nr. Stock number	Abmessungen, mm Dimensions			Gewicht Weight	Hubkraft Lift
	D	H	M	g	N
M162254	25	7	M4	18	36
M162324	32	7	M4	29	75
M162404	40	8	M4	63	90
M162508	50	10	M8	94	170
M162638	63	14	M8	206	290
M162808	80	18	M8	472	550

MT370 Handgriff M8 / handle M8



M162508



Flachtopfmagnete Shallow pot magnets

Werkstoffe: **AINiCo 43/5**, Weicheisen

Material: **AINiCo 43/5**, soft iron

Temperatur:

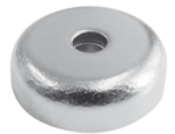
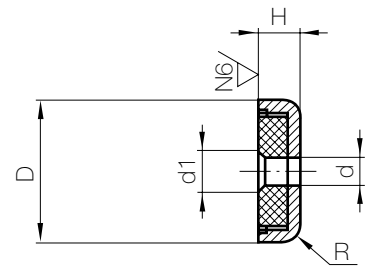
Temperature: **max. 500°C**

Ausführung: blau verzinkt

Execution: blue zinc-coated

Lieferung mit Polschlussplatte

Delivered with pol plate



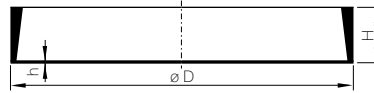
M134

Bestell-Nr. Stock number	Abmessungen, mm Dimensions					Gewicht Weight	Hubkraft Lift
	D	H	d	d1	R	g	N
M132	19	7.5	4.8	10.5	3	13	30
M133	29	8.6	5.7	11.5	4	36	50
M134	38	10.6	5.9	11.5	5	76	80



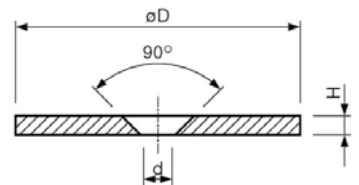
Gummilippe als Schutzüberzug für Flachtopfmagnete Rubber lip as a protective coating for shallow pot magnets

Bestell-Nr. Stock number	Abmessungen, mm Dimensions		
	D	H	h
M500GU	52	6	0.5
M570GU	59	6	0.5
M630GU	65	8	0.5
M800GU	83	11	0.5



Stahlscheibe mit Senkung Steel disc with sinking

Bestell-Nr. Stock number	Abmessungen, mm Dimensions			Gewicht Weight	Ausführung Execution
	D	H	d	g	
US12	12.0	2.0	4.0	1.5	verzinkt / zinc-coated
US17	17.0	2.0	6.0	4.0	verzinkt / zinc-coated
US23	23.7	1.5	5.0	5.0	vernickelt / nickel plated
US27RF	27.0	3.0	5.5	12.0	Edelstahl / stainless steel
US27	27.0	3.0	5.5	12.0	verzinkt / zinc-coated
US34	34.0	3.0	5.5	20.0	verzinkt / zinc-coated
US45RF	45.0	2.0	6.2	24.0	Edelstahl / stainless steel
USRF	45.0	3.0	5.5	36.0	verzinkt / zinc-coated
US64	64.0	3.0	5.5	65.0	verzinkt / zinc-coated



Stahlscheibe mit Doppelklebeband Steel disc with double-sided tape

Bestell-Nr. Stock number	Abmessungen, mm Dimensions		Ausführung Execution
	D	H	
MS20	20.0	2.0	verzinkt / zinc-coated
MS20W	20.0	2.0	weiss lackiert / white painted
MS30	30.0	2.0	verzinkt / zinc-coated
MS30W	30.0	2.0	weiss lackiert / white painted
MS40	40.0	2.0	verzinkt / zinc-coated
MS40W	40.0	2.0	weiss lackiert / white painted
MS60	60.0	2.5	verzinkt / zinc-coated
MS60W	60.0	2.5	weiss lackiert / white painted

